

Engineering PH GradeAssist



PRODUCT SITE: <http://www.prenhall.com/bedford>
PRENTICE HALL 2002

What is it?

Simply put, PH GradeAssist is an online tool that enhances academic productivity. For instructors, the system provides a more natural transition from traditional paper-based assignments to timesaving, automatically graded online homework. Students prefer this system because it provides immediate, individualized performance feedback and the opportunity to generate unlimited practice through algorithm-driven study sessions.

What's in it For Students?

Independent, Self-paced Practice Homework. With PH GradeAssist, students can go on-line and work "unlimited" versions of problems based one-to-one on those in the assigned PH textbook. Because problems are algorithmically generated, each homework session generates slightly different problems with different answers while providing students with immediate scoring and feedback on their work.

What's in it For Instructors?

By registering and going online, instructors can post assignments, receive grades, and also build detailed information on overall class performance on assignments.

What does it require?

All you need is a browser and an internet connection. There is no special software needed. Simply login and begin.

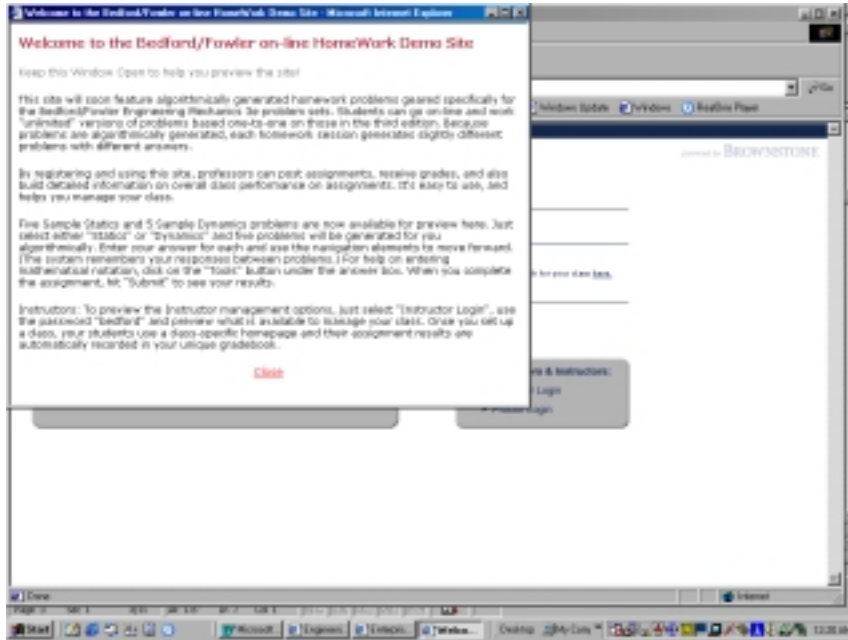
TO DEMO PH GRADEASSIST FOR BEDFORD-FOWLER:

1. Go to <http://www.prenhall.com/bedford>. Click on Bedford and Fowler, Statics and Dynamics, 3/e.
2. Choose "DEMO".

Notice the Professor and Student Login/Registration Options. These options give full site access.
Notice the Student and Instructors Guides links. These are PDF files available to download.



3. A Pop up Window will appear. It gives basic instructions.

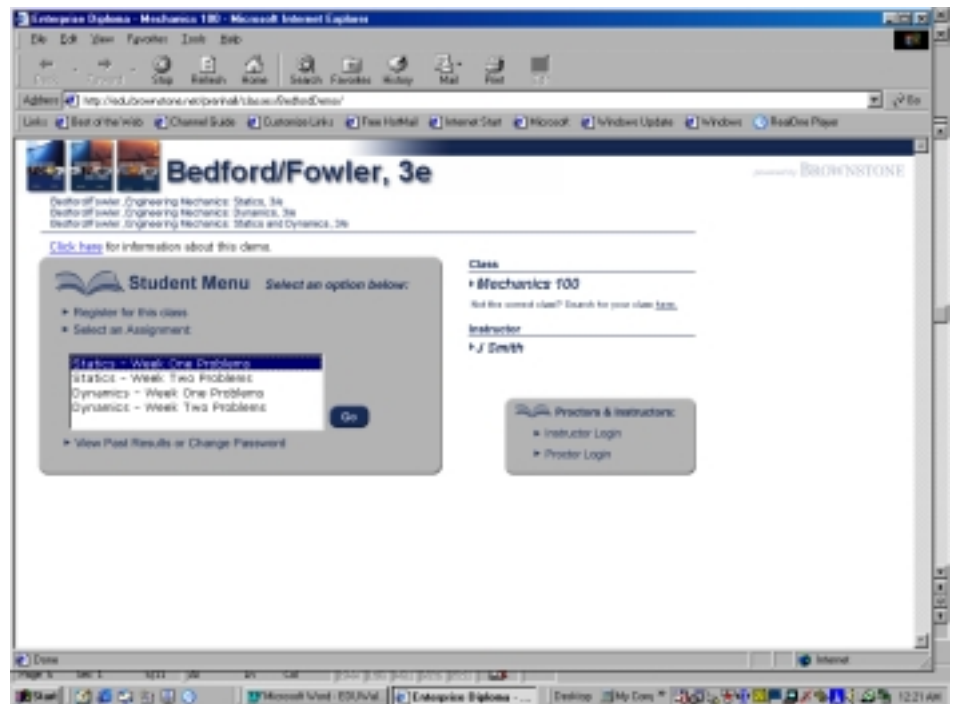


This is a sample assignment with a fictitious instructor. This demonstration has content created for Bedford-Fowler, 3e.

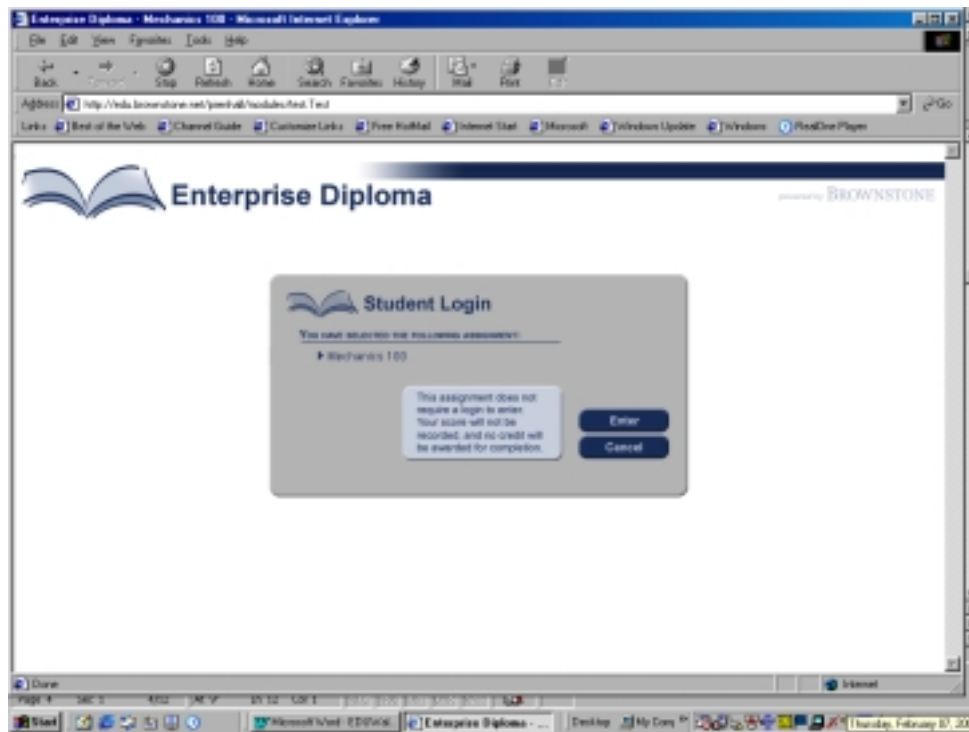
4. Select the **Statics - Week One Problems** and click **Go**.

Note:

Grade Assist lets you enter Real Math notation for your answer. To do so, you need to install a plug in. The first time a user logs into the system, they will be asked to download the math package.

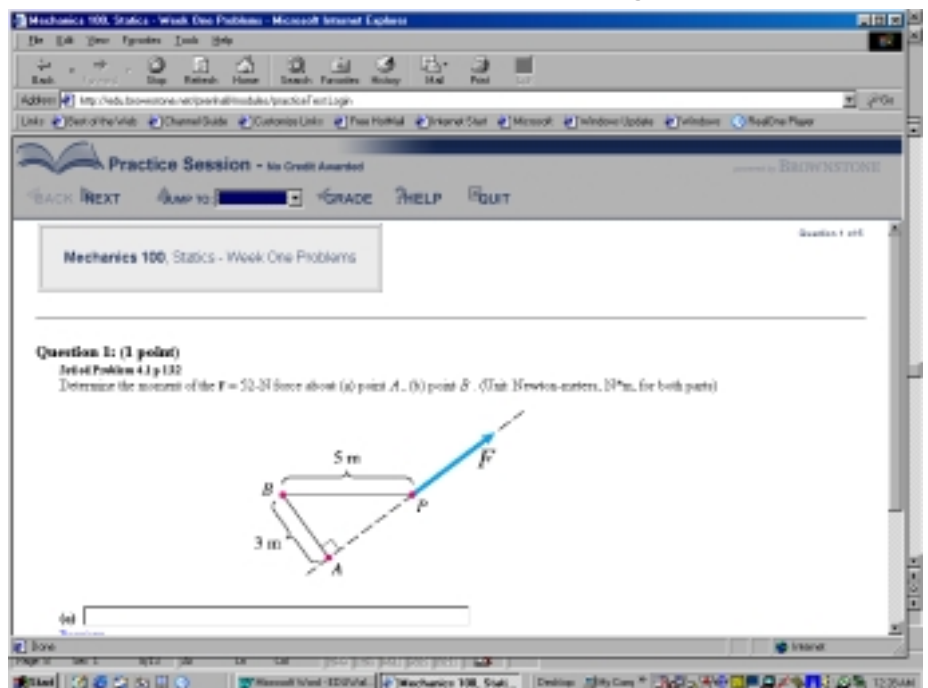


5. Select **Enter** to create a random assignment.

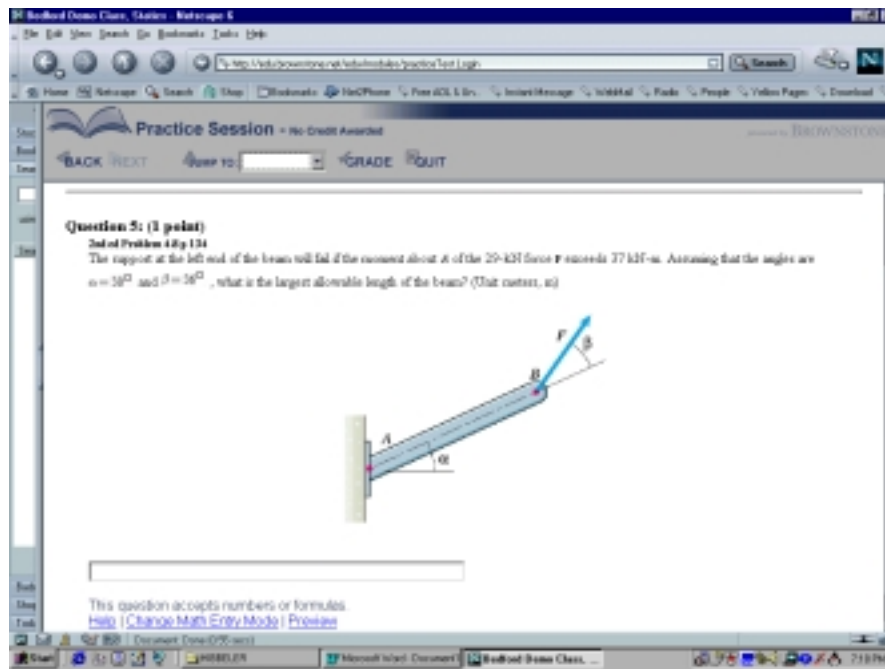


The System generates random versions of the questions assigned by the instructor. Many professors find algorithmic questions wonderful for homework (since each student gets a related, but not identical problem.)

- ⌚ Notice the problem is keyed to the book and uses the art from the book.
- ⌚ Notice questions can be multipart--students enter answers where provided.
- ⌚ UPCOMING FEATURE - Students will be able to print out the assignment, do their work, and submit answers. The system will remember the questions they created.
- ⌚ Of course, students can also print out their assignment and submit their full solution to their professor by hand

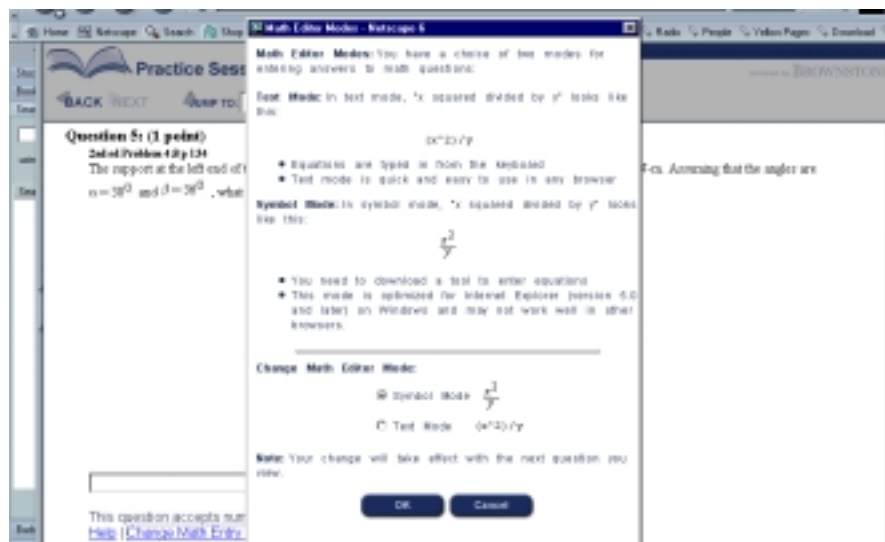


6. Choose "Jump to" question 5 using the pull down menu.



Grade Assist accepts both symbol and text mathematical notation. You can see this by selecting "Change the Math Entry Mode" at the bottom of the screen. Click this link.

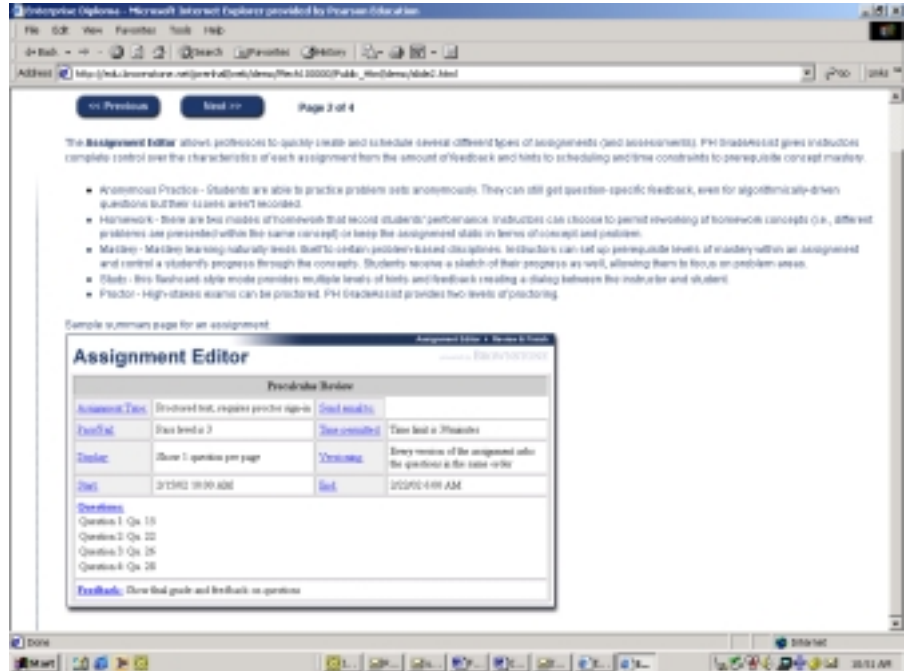
7. A window about the different types of notation appears - when you choose symbol mode, a special symbol palette becomes available.



8. Enter an answer to a question and **press grade**. Grade Assist will note any questions that have not been answered. It will ask a student to answer these before they can receive a grade.

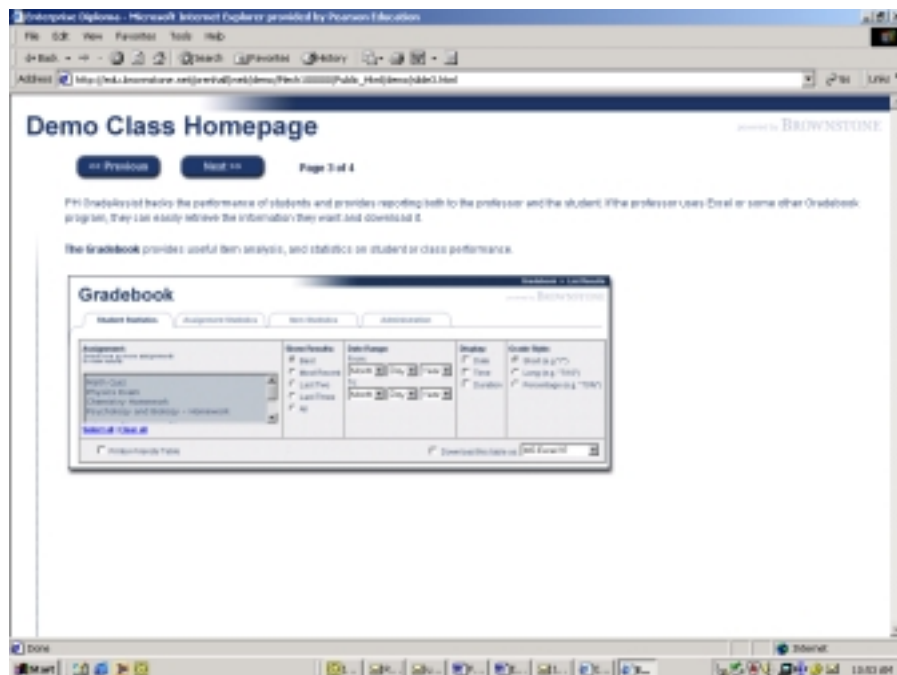
ASSIGNMENT EDITOR

11. The Assignment Editor allows professors to quickly create and schedule several different types of assignments (and assessments). PH GradeAssist gives instructors complete control over the characteristics of each assignment from the amount of feedback and hints to scheduling and time constraints to prerequisite concept mastery.



GRADEBOOK

12. PH GradeAssist tracks the performance of students and provides reporting both to the professor and the student. If the professor uses Excel or some other Gradebook program, they can easily retrieve the information they want and download it.



At this

point you should have a general feeling for the power and flexibility of PH Grade Assist.

Return to the program and freelance a bit. Explore some of the more advanced features. One of the strengths of PHGA is its intuitive interface making it easy to develop a working knowledge of the program after just a few uses.